

Elsie Blue George Photograph List

1. A. Unknown person, n.d.
B.
2. A. Arnold Lee "Donny" Blue, Lillian Harris Blue, ca. 1944
B. Chief Sam Blue and friends ca. 1959
3. A. L-R Eva George Blue, Louisa Canty Blue
Nathan Blue, Arnold Lee "Pete" Blue December 1958
B. Mary Starnes, mother of Jim Starnes, n.d.
4. A. Lucy Starnes, unknown child, April 1951
B. Alberta Canty Ferrell, October 1952
C. Jill Caudle, n.d.
5. Catawbas, n.d.
6. A. J.P. George, Will Aldridge, n.d.
B. Eva George, n.d.
7. A. Andrew Blue, n.d.
B. Doris Wheelock Blue, n.d.
C. L-R Mildred, Betty, Harvey Blue, n.d.
D. Clarence Blue, n.d.
E. Elsie Blue George, ca.1940; inscribed 'your wife wink'
8. A. Gilbert Blue, ca. 1934
B. Elsie Blue, Albert Sanders, Jr. 'Bill'
9. A. Elsie Blue, ca. 1929
B. Landrum Leslie George, n.d.
10. A. Eva George, n.d.
B. Leslie Blue, ca. 1943
11. A. Gail Blue, n.d.
B. Toy Blue, n.d.
C. Jeanette Blue, n.d.
D. Jeanette Blue, n.d.
12. A. Betsy Bob Harris, Lucy Starnes, child unknown, n.d.
B. Betsy Bob Harris, Lucy Starnes, n.d.
13. A. Landrum George, Lucy Starnes, n.d.
B. Lucy Starnes, Elsie Blue George, n.d.
14. A. William Watts, Sr., ca. 1934
B. William Watts, Sr., ca. 1934
C. William Watts, Sr., Gilbert Blue, ca. 1934
D. Sylvia Blue, ca. 1936
E. Gilbert and Sylvia Blue, ca. 1936
F. Gilbert Blue, ca. 1936
G. Eva George Blue, ca. 1934
H. Gilbert Blue, ca. 1934
I. Eva and Gilbert Blue, ca. 1934
15. A. Diane George, 1945
B. Elsie George, Diane George, n.d.
C. Diane, George, n.d.

16. A. Landrum George, World War II, ca. 1945
B. Elsie Blue George, 1943
17. Landrum Leslie George, New York, 1945 in transit to WWII
18. A. Frances George, 1946
B. Evans and Phebia George, n.d.
C. Evans and Phebia George, n.d.
19. A. Geneva George, n.d.
B. Thelma Canty, n.d.
20. A. Barbara & Leonard Talley, Jr., n.d.
B. Betty, Marlene, Guy, Barbara Garcia, n.d.
C. Marlene Garcia, 1960-1961, Catawba Indian School, age 7
21. Betty Juanita Blue, Mildred Louise Blue, n.d.
22. A. Dewey & Floyd Harris, n.d.
B. L-R Eliza Gordon, Larry Thomas, Gladys Thomas, 1954
23. Uncle Alonzo Canty, uncle to Louisa Canty Blue, n.d. (?)
24. L-R Addie Mae Blue, Marcille Blue, Leola Blue, Fannie Harris Canty George, Era Mae Blue, Mary Plyler, Alberta Canty, Lucy Starnes, Virginia Blue, Eliza Gordon, Elsie Blue George, Georgia Harris
25. A. J.C. Davis, school teacher, n.d.
B. Willard Hayes, school teacher, n.d.
26. Evans George, Frances George
27. Frell, Whitey, Claude "JC" Ayers, n.d.
28. A. Elaine George, n.d.
B. Donnice Davis, n.d.
29. A. Evans "Buck" George, n.d.
B. Lavern George, n.d.
30. Albert Sanders, Jr. "Bill", 1944
31. Archie Wheelock, Charles Callis, Robert "Bob" Harris, unknown, unknown
32. L-R Nancy "October" Harris, Jeanette George, Lula Blue
33. A. Lula Blue, Jeanette George, n.d.
B. Vera Louise Blue, Elsie Inez Blue, n.d.
34. A. adults l-r Mamie Blue, Era Mae Blue, children unknown, n.d.
B. Eugene Beck, Sam Blue, Era Mae Blue(back), Louisa Canty Blue, n.d.
35. A. Chief Sam Blue in front with others, n.d.
B. Kay Cabiness, n.d.
C. Pete Blue, 1948
D. Nathan Blue, n.d.
36. Samuel T. Blue birthday dinner with family, n.d.
37. Sara Plyler, Evelyn Brown George, Elizabeth Plyler, Elsie Blue George, n.d.



A



B

1



2

A



B

• DEC 58





A



B



C

Jan 1954

4





A



B

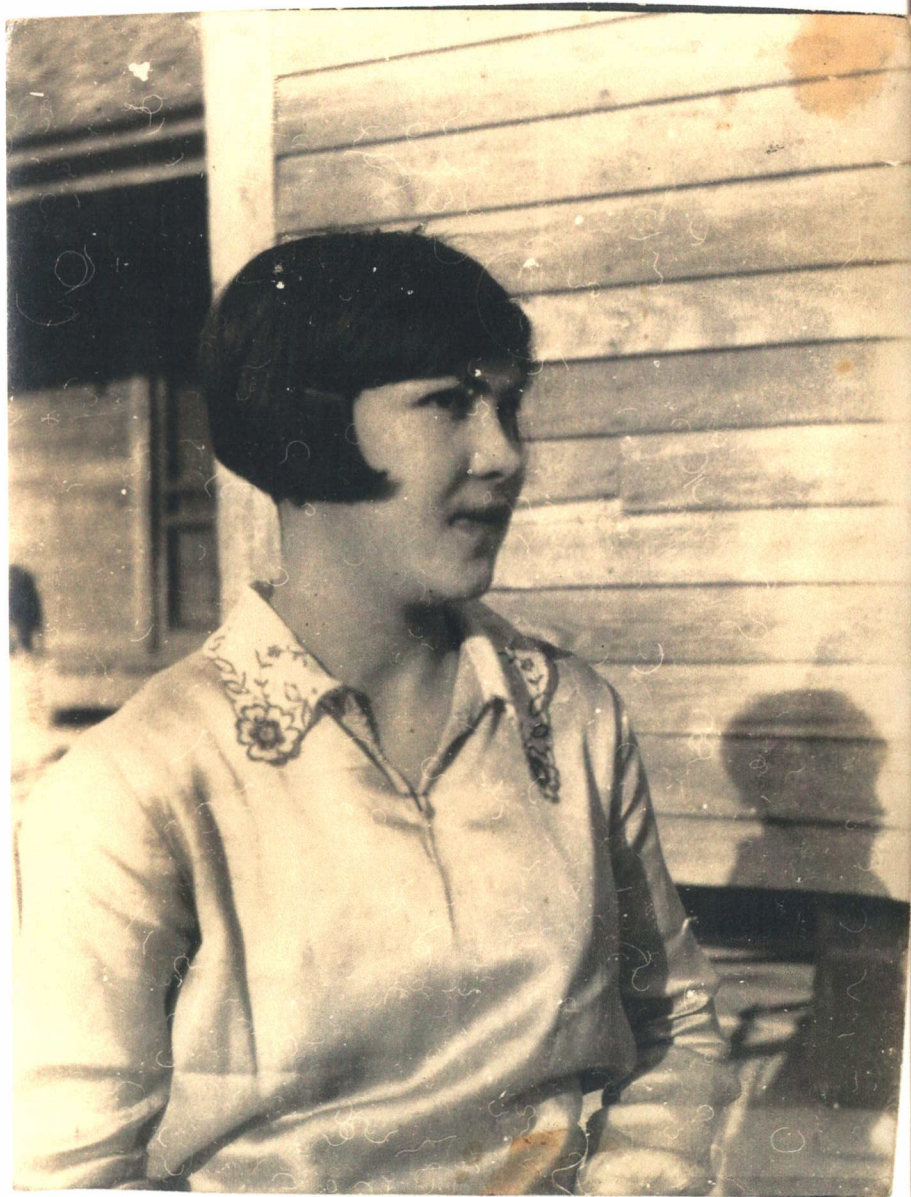




A



B



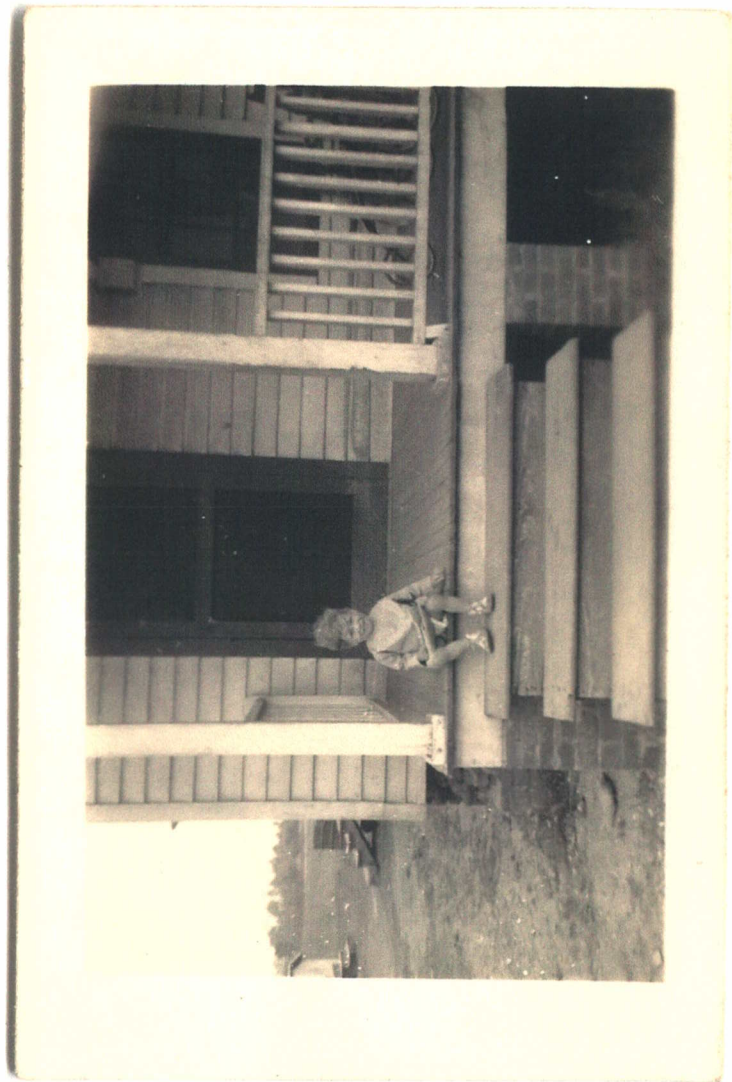
A



B



A



B



3

D

11



A



B

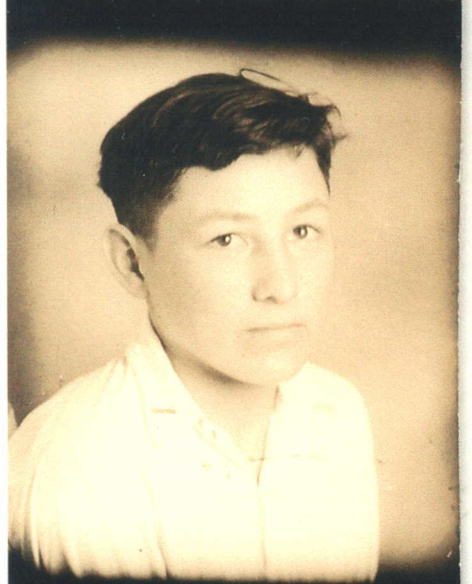
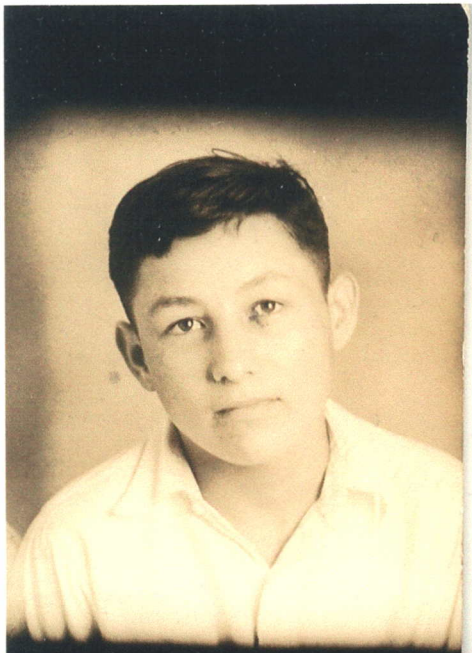


12

A



B







A



B





12

A



B

C

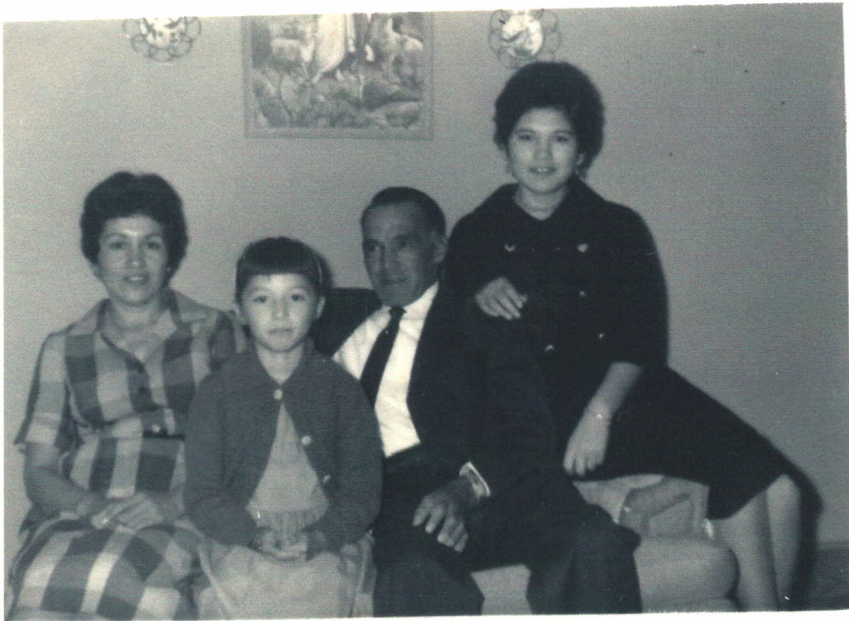


17

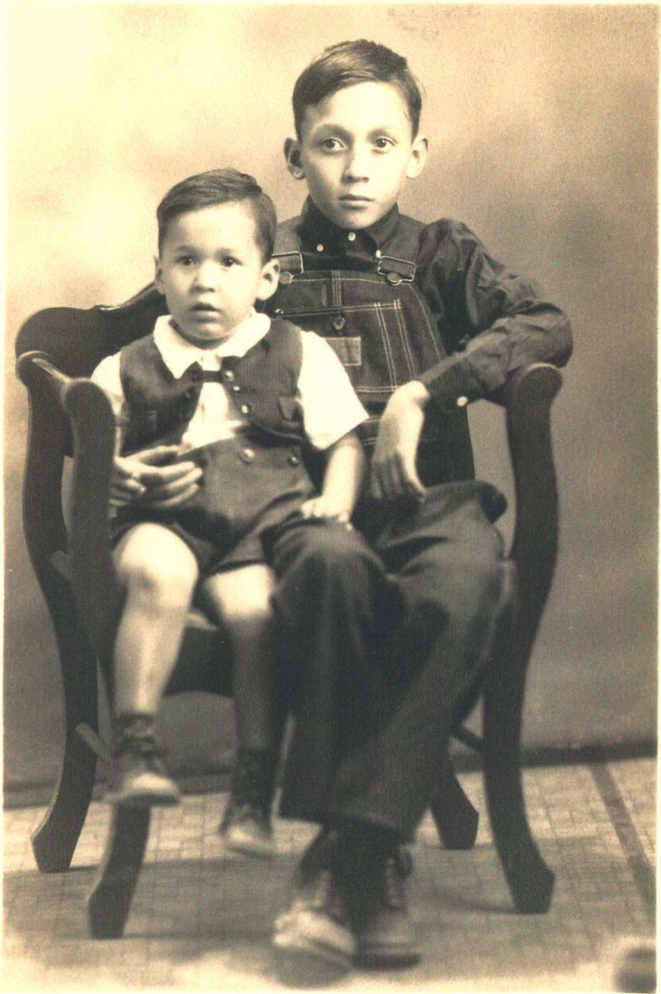
A



B







OCT • 54



22

A

B



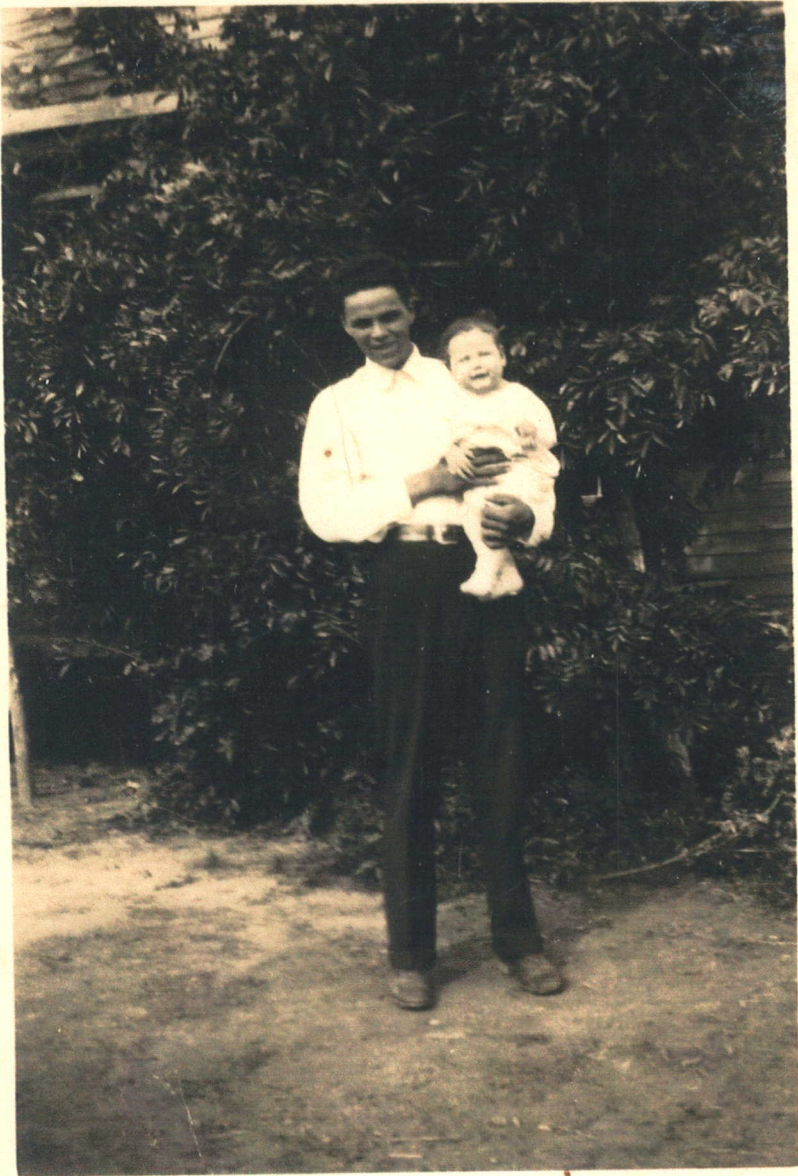




A



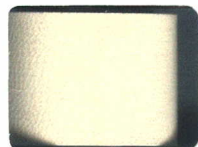
B



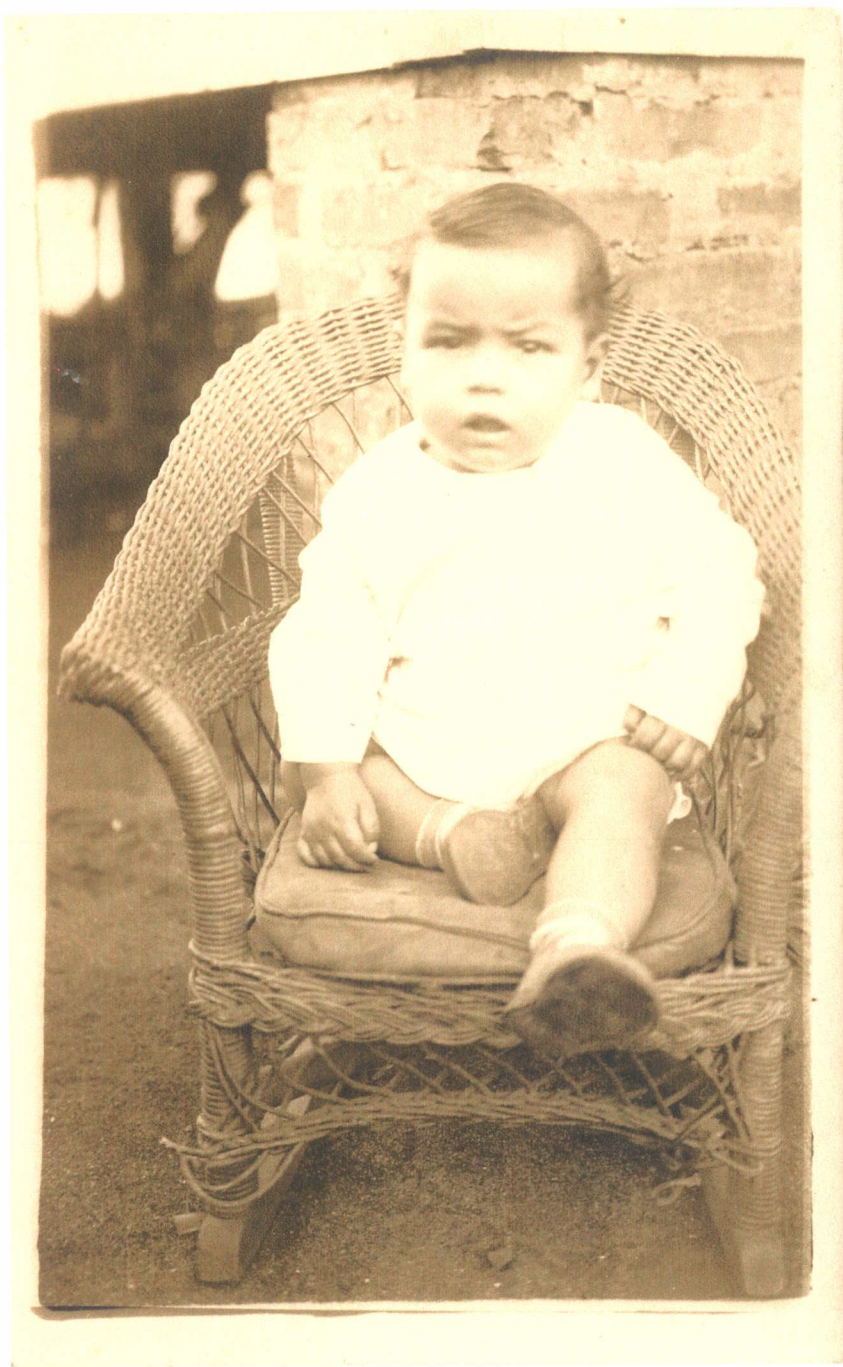




A



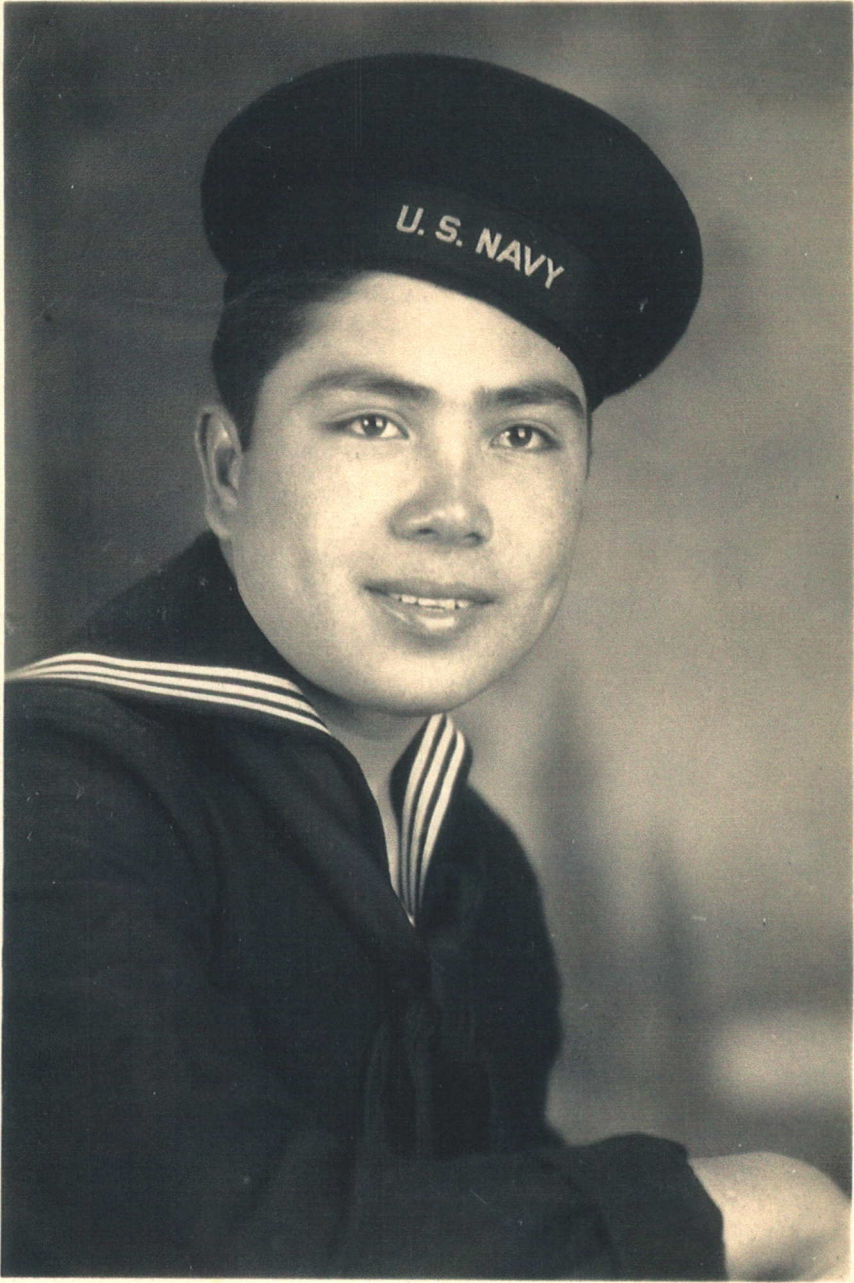
3



3

4

3













A



B.



C



D.



